

# HealthCheck Software for Remote Diagnostics.

## How Do You Keep Your System Healthy With 1,100 Cameras in 70 Locations?

From any location, you can automatically contact your Lanex™ brand systems to quickly detect camera, connectivity, or other system problems. Whether you have one unit or one thousand, our user-friendly interface helps you pinpoint the error so your recording won't miss a beat.

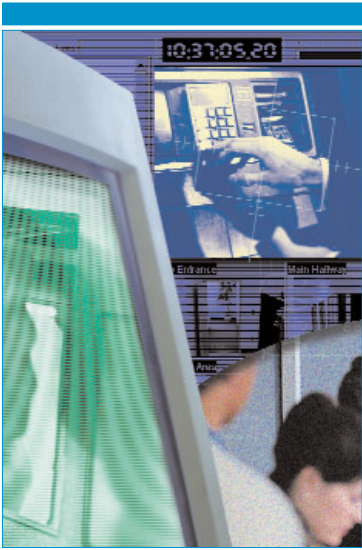
### HealthCheck™ Features

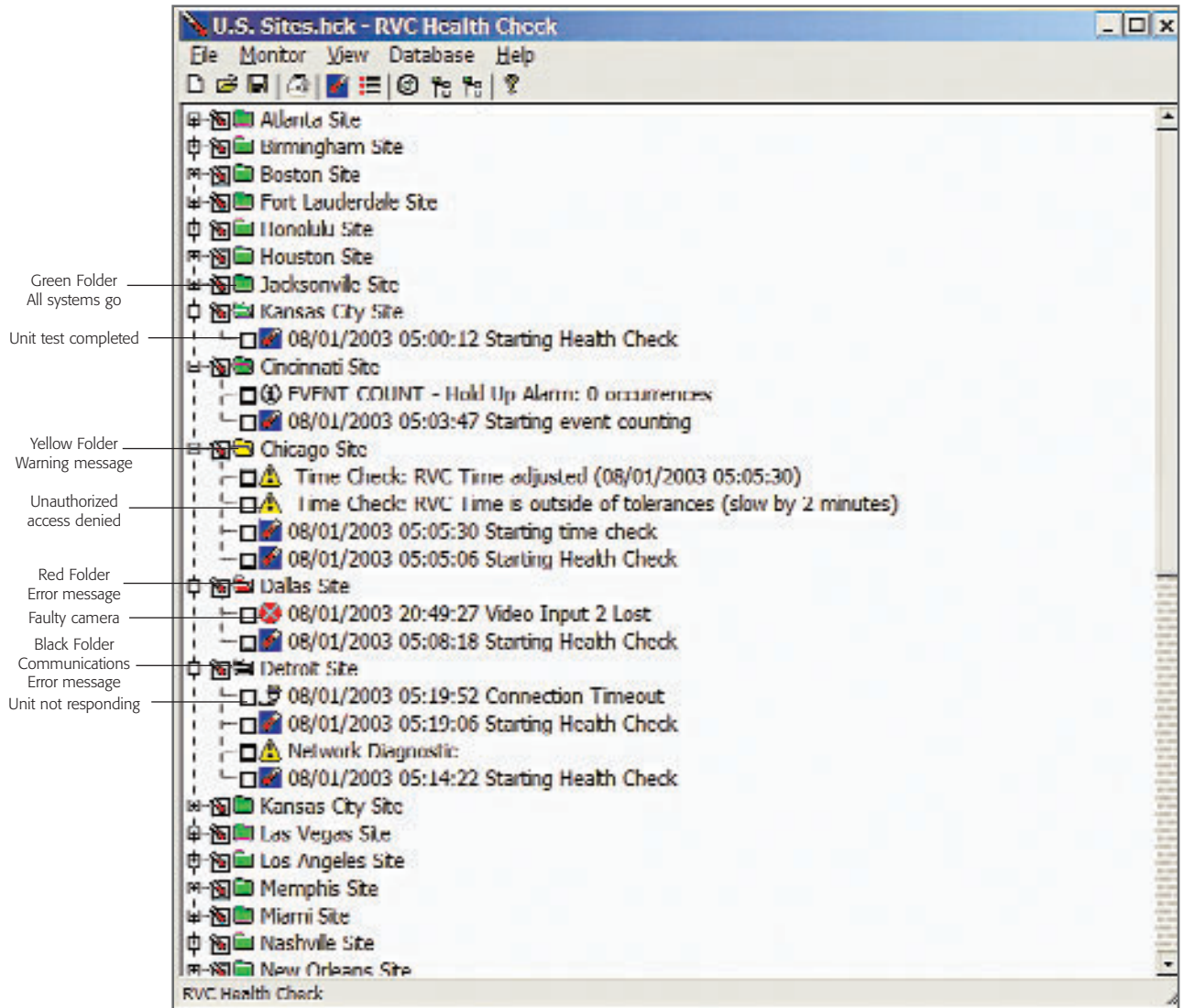
- ✓ Secure contact is initiated by the user and not by the failing system.
- ✓ Schedule tests to run at intervals of your choice.
- ✓ Access results at your convenience.
- ✓ View the status of each Lanex DVR/CCTV system.
- ✓ Updates software and codes on Lanex DVR.
- ✓ Check and update time.
- ✓ Counts number of events that have occurred.

## Don't Worry... The Doctor's In.



Monitor Your System With  
**HealthCheck**  
A Lanex Diagnostic Tool





The HealthCheck software remotely monitors the status of each of your Lanex DVR/CCTV systems, as well as connected devices, such as cameras, ATM or POS data capture devices. HealthCheck retrieves information from the DVR system log and displays it in a graphic "tree view" format. At a glance, users can determine the status of all DVRs selected for automatic polling. By displaying a variety of error, warning and connection status messages, HealthCheck helps users quickly anticipate and troubleshoot problems and schedule preventive maintenance. **HealthCheck does not depend on a failing device to call the user.**



*Check the system integrity of your Lanex DVRs anytime—from anywhere—with HealthCheck.*